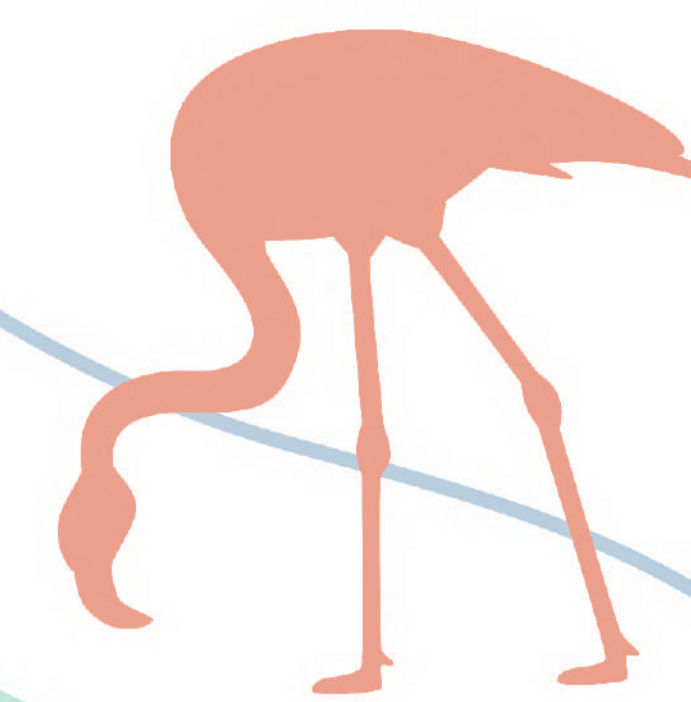




Welcome in the heart of the Natura 2000 "Camargue"



A delta classified under two European directives

Concerned municipalities	Birds Directive	Habitats Directive
Arles Saintes-Maries-de-la-Mer Port-Saint-Louis-du-Rhône	220 574 hectares 110 bird species of Community Importance	113 448 hectares 28 habitats of Community Importance 22 species of Community Importance
	Maximum altitude	
	5 m	

The Natura 2000 network is a set of natural sites identified within the European Union for the rarity and fragility of their wild species (animal or plant) and natural habitats. Its goal is to ensure the maintenance or restoration in a good condition of natural environments and species recognized as an European interest. Its ambition is to reconcile human activities and biodiversity conservation. Natura 2000 "Camargue" sites are led by the Regional Natural Park of Camargue since 2011.

The Objectives of the site

The preservation of natural environments and species with high heritage significance.



I am a small freshwater aquatic turtle, you will recognize me by my blackish shell more or less punctuated with yellow spots. I frequent stagnant or slow waters like marshes and canals, be discreet, I need calm and dive at the slightest alert. Don't look for me in winter, I hibernate in the mud while waiting for spring to arrive.

Please be careful when driving, we often cross roads slowly to look for food or explore our territory.

European pond turtle

We are emblematic plants of the Camargue, robust, we resist high heat and salt. You will meet us in the small bushy formations that are locally called sansouïres.

I, Sea-lavender, am one of the 6 species of sea-lavender present in the Camargue. I am a symbol of Camargue culture and locally known as the flower of the guardians.

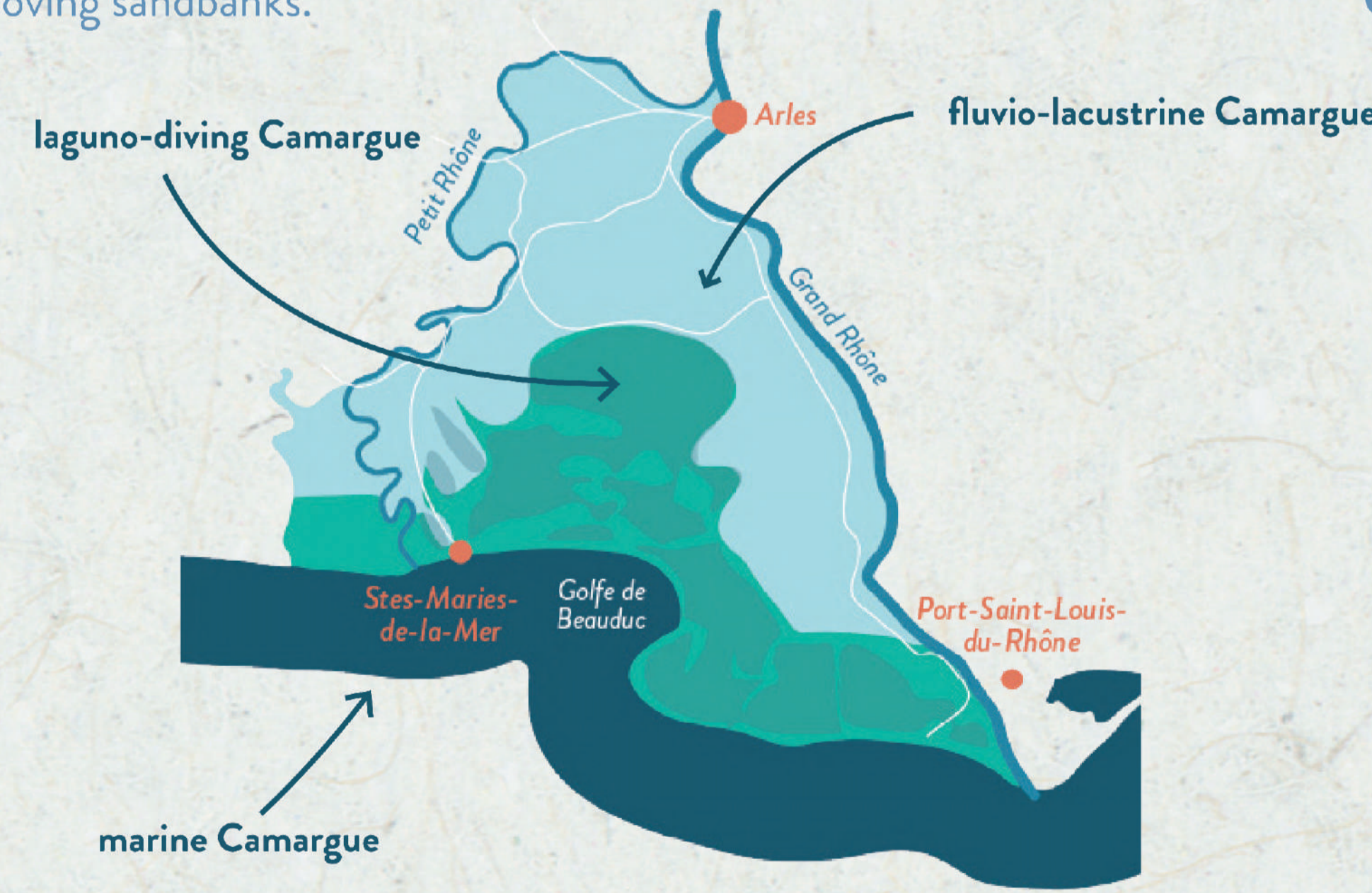
We, Salicornia, are a group of about thirty species growing on the coast. We owe our name to the fact that we appreciate salty soils and to the shape of our stems composed of numerous horn-shaped segments.

We are particularly vulnerable if we are trampled, please avoid walking in the natural environments where we are.

Maintenance of socio-economic activities

Extensive breeding	Rice cultivation	Salt production	Fishing
Camargue is a breeding area, long known as an important site for sheep farming, today it is the breeding of bulls and horses (organized in manade) which is the majority within the delta. Grazing generally extends over areas unfavorable to agriculture such as marshes, sansouïres (salt meadows) and lawns. It can also contribute to productive meadows, and crop residues. Practiced extensively, grazing helps maintain open environments rich in biodiversity. This activity occupies an important place in the economy and management of the Camargue territory.	Limited for several centuries to very modest areas due to the lack of sufficient irrigation resources, rice cultivation only expanded after the Second World War. Recognized as one of the economic pillars of the Camargue, this crop, big consumer of fresh water, plays a considerable role in the hydrology of the delta and is home to many species of birds in search of food. Its role in desalinating the land allows rice cultivation to be included in a rotation system with other cereals such as durum wheat, rapeseed or sunflower. The PGI (Protected Geographical Indication), obtained in June 2000, is a major asset for rice production.	Previously practiced in an artisanal and localized way, salt production took on an industrial dimension at the end of the nineteenth century. Its exploitation is mainly oriented towards industrial development (snow removal and chemistry) in Salin-de-Giraud while around Aigues-Mortes, it is a harvest of salt for food use . Covering an area of more than 7,000 hectares, the Salin-de-Giraud in the Grande Camargue has a strong ecological and landscape interest . Indeed, this vast area is very favorable to various invertebrates which are the basis of the diet of many birds such as the pink flamingo.	Professional fishing is practiced at sea, in the river, in ponds, or on the sandy coast. The species caught and the techniques depend on the environment and the degree of salinity. Depending on the fishing areas, the methods differ, small fishing trades are very versatile . The fishing cantonnement of the Gulf of Beauduc was created in 2013, at the initiative of local fishermen, with the main objective of preserving and restoring this nursery area for flatfish (sole, turbot). It is managed by the Regional Natural Park of Camargue, in cooperation with professional fishermen and in partnership with local stakeholders.

"The Natura 2000 "Camargue" sites include the fluvio-lacustrine Camargue, under the influence of the Rhône and fresh water; the laguno-diving Camargue, under the influence of salt and marine upwellings, as well as the marine Camargue characterized by constantly moving sandbanks."



Natura 2000 sites extend out to sea from the coast to: 5 km for the Habitats Directive / 20 km for the Birds Directive.

Some of the Natura 2000 sites also benefit from definitive land protection thanks to the actions of the Conservatoire du littoral.



Be careful, we are walking on eggs!

This small bird with a round silhouette like a pebble and short legs frequents wetlands, it is a member of the group of waders. Very nervous, it travels the mudflats and beaches, alternating between fast walking and short breaks in search of small invertebrates. They need peace and quiet because they are very sensitive to disturbance and trampling, just like their eggs and chicks, almost invisible on the beach.

By the way, can you find the 3 eggs of this species in the photo on the left?



Kentish plover

Regional Natural Park of Camargue
04 90 97 10 40 - contact@parc-camargue.fr
www.parc-camargue.fr

Find all the information on the Natura 2000 « Camargue » sites at the following internet address: parc-camargue.n2000.fr

